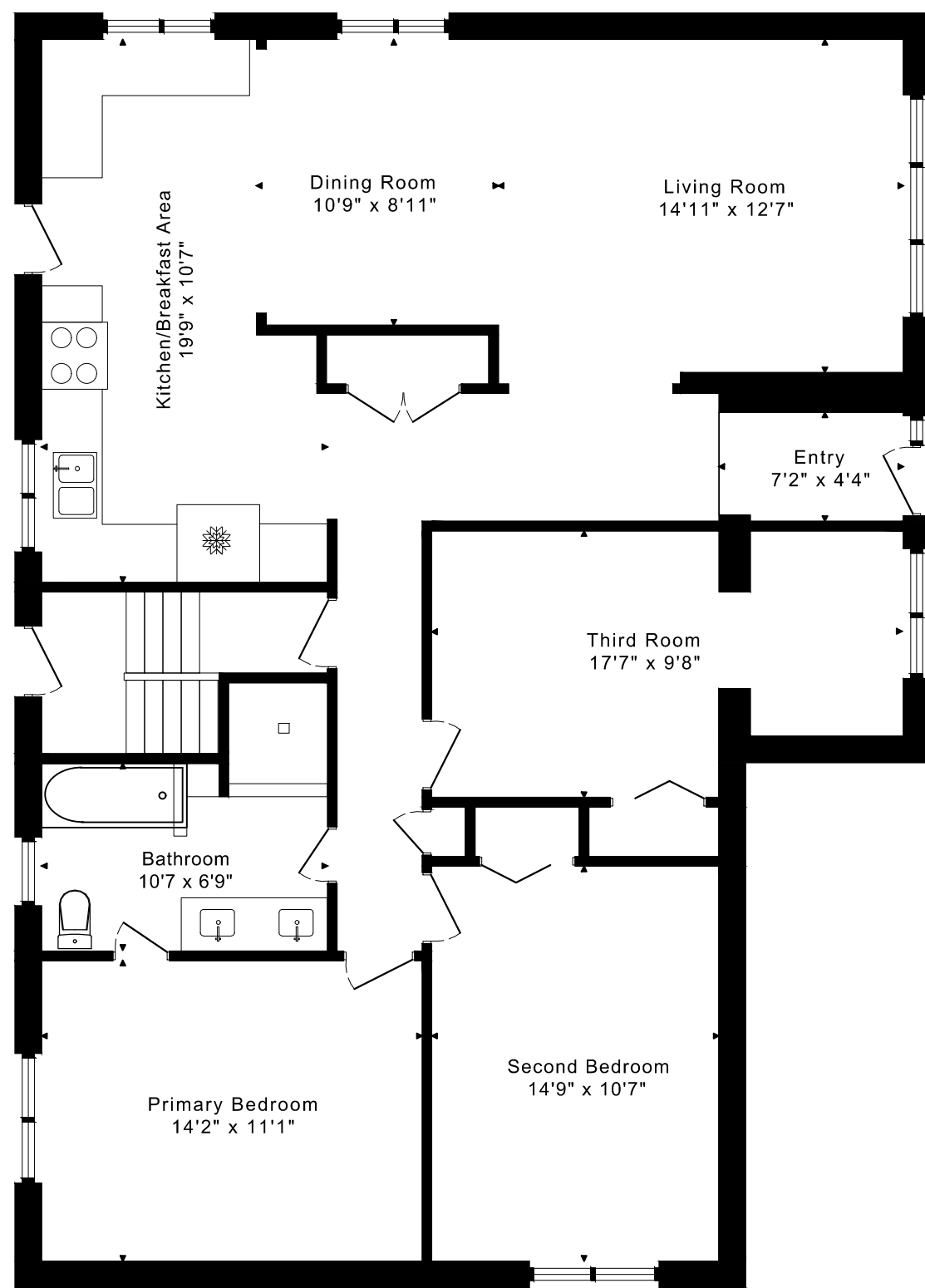
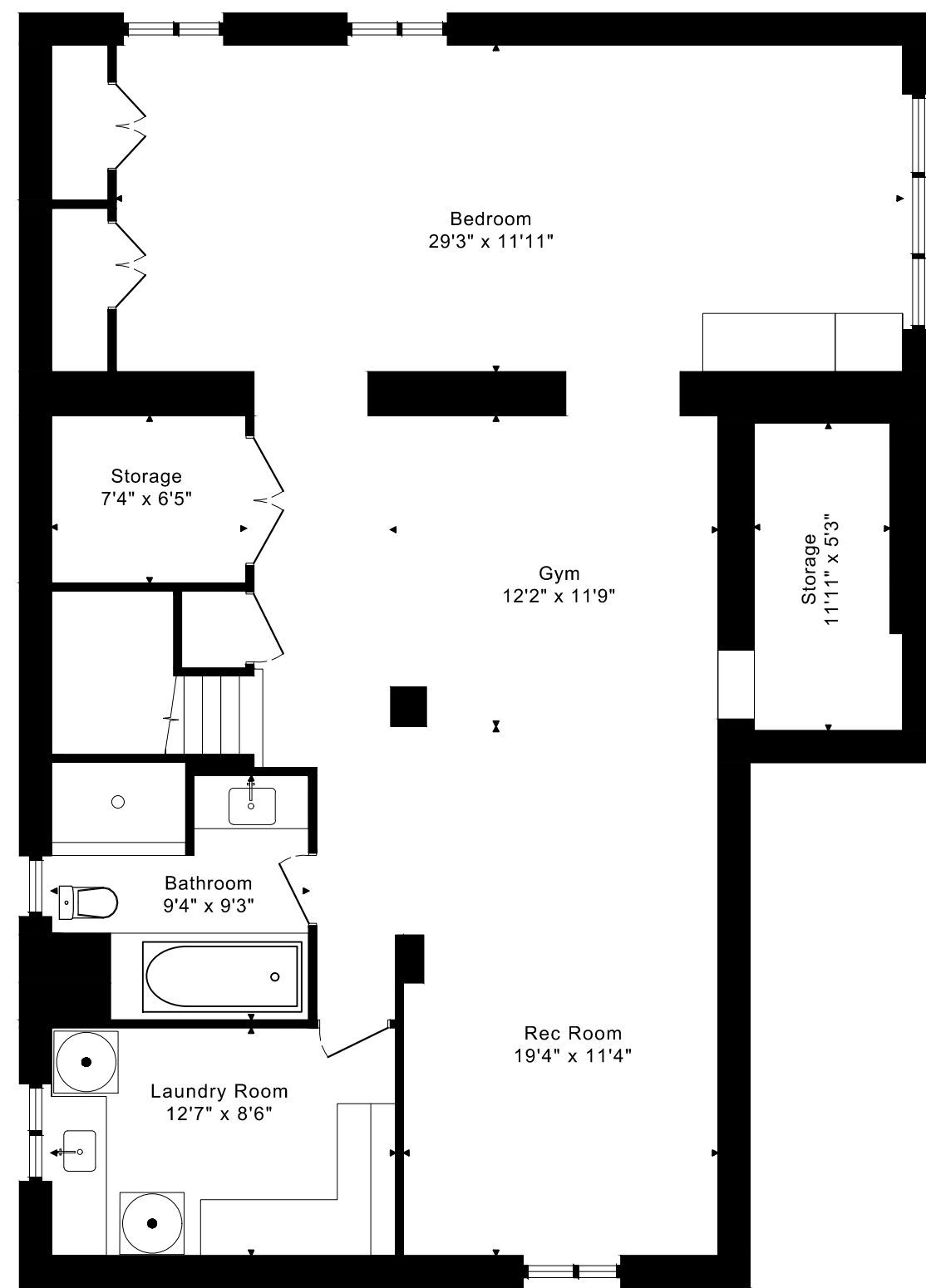


2 CANEROUTH DRIVE FLOOR PLANS



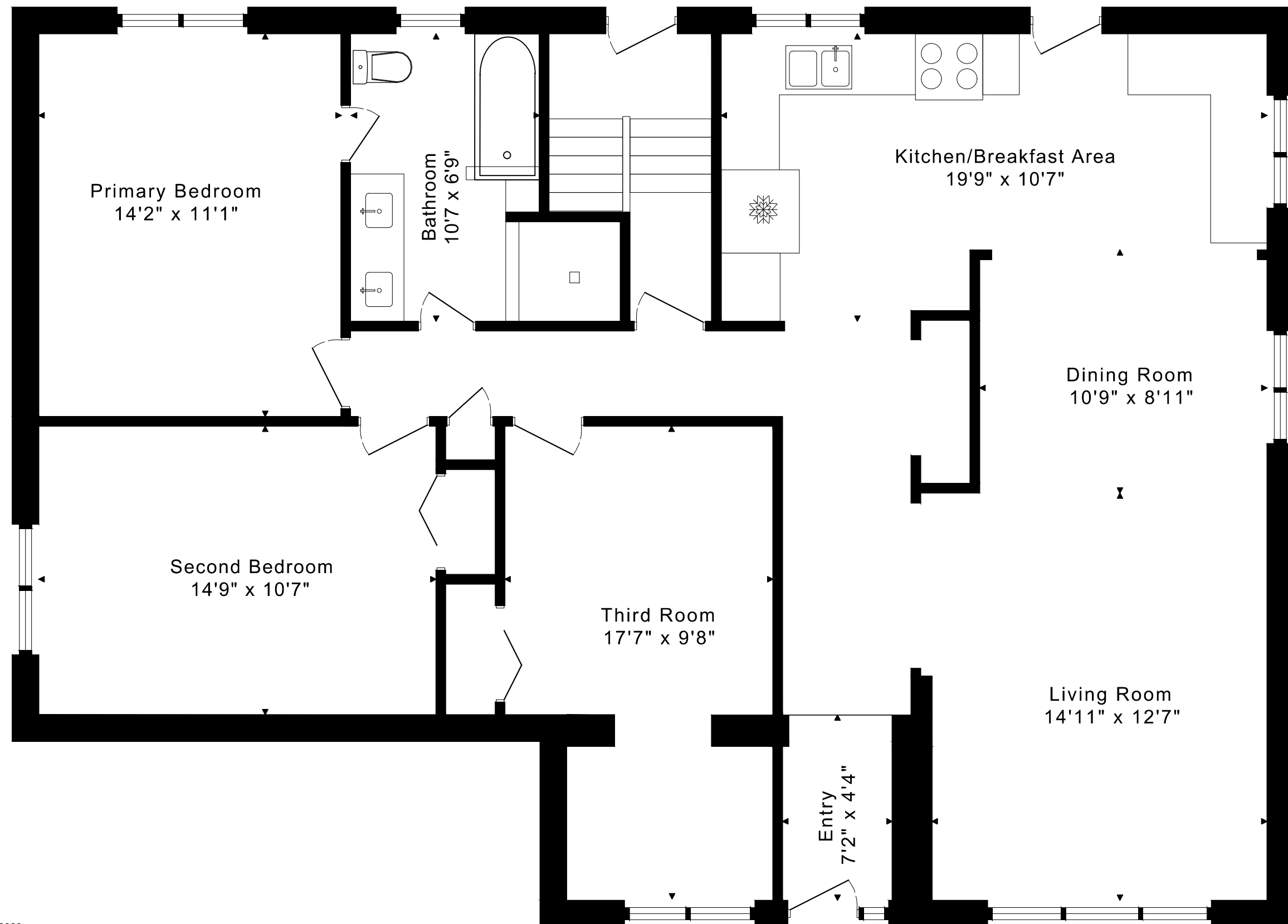
MAIN FLOOR
1460 SQUARE FEET



LOWER FLOOR
1460 SQUARE FEET

2 CANEROUTH DRIVE FLOOR PLANS

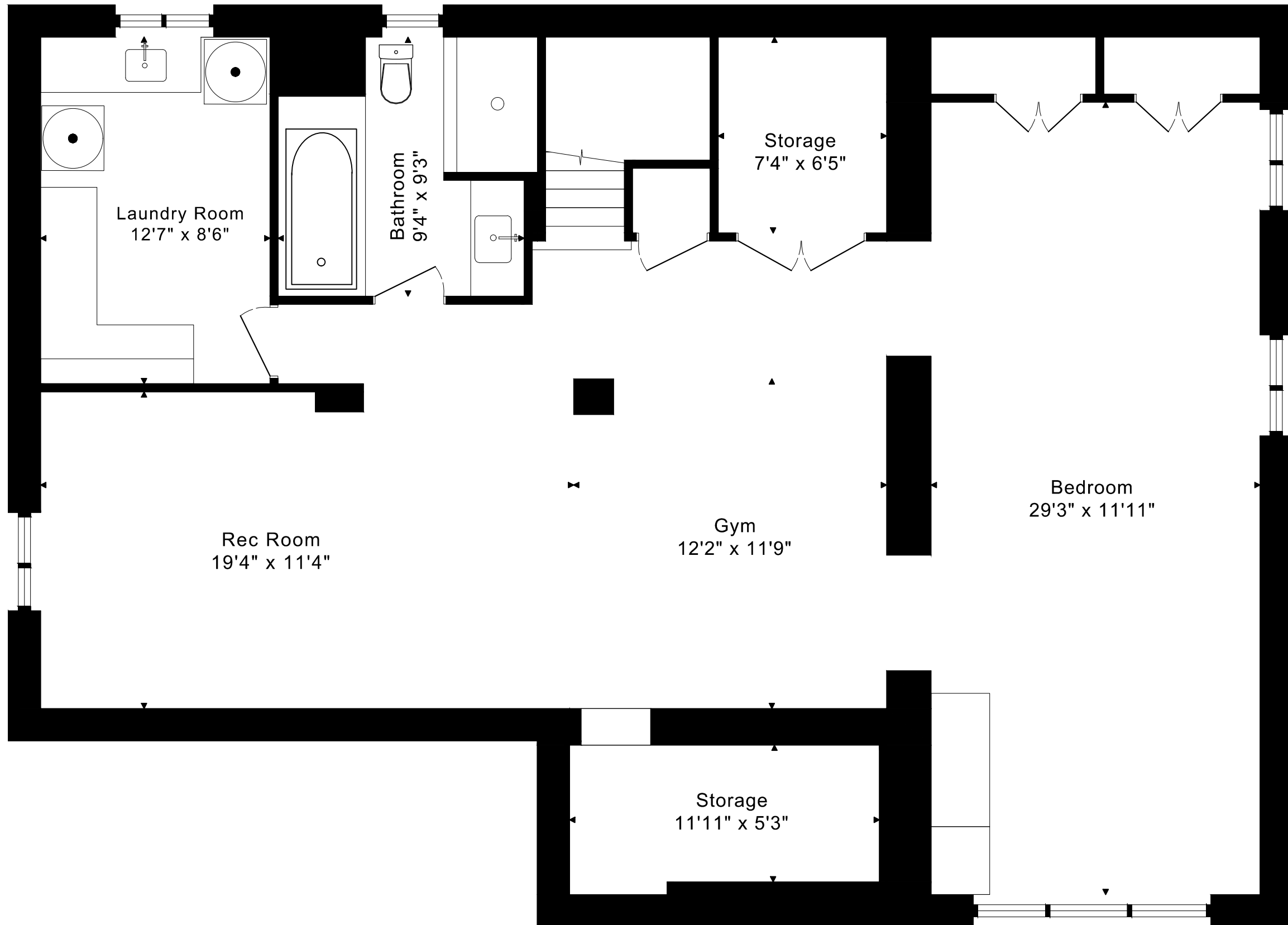
MAIN FLOOR 1460 SQUARE FEET



2 CANEROUTH DRIVE

FLOOR PLANS

LOWER FLOOR 1460 SQUARE FEET



2 CANEROUTH DRIVE ROOM MEASUREMENTS

Floor	Room	Imperial				Metric [m]	
		Length		Width		Length	Width
		Feet	Inches	Feet	Inches		
Main	Entry	7	2	4	4	2,18	1,32
	Living Room	14	11	12	7	4,55	3,84
	Dining Room	10	9	8	11	3,28	2,72
	Kitchen/Breakfast Area	19	9	10	7	6,02	3,23
	Primary Bedroom	14	2	11	1	4,32	3,38
	Second Bedroom	14	9	10	7	4,50	3,23
	Third Room	17	7	9	8	5,36	2,95
	Bathroom	10	7	6	9	3,23	2,06
Lower	Rec Room	19	4	11	4	5,89	3,45
	Bedroom	29	3	11	11	8,92	3,63
	Bathroom	9	4	9	3	2,84	2,82
	Laundry Room	12	7	8	6	3,84	2,59
	Gym	12	2	11	9	3,71	3,58
	Storage	7	4	6	5	2,24	1,96
	Storage	11	11	5	3	3,63	1,60

CAPTURED ON: 14 OCT 2023
DIMENSIONS ARE APPROXIMATE AND SHOULD BE CONSIDERED
ILLUSTRATIVE ONLY.

1460 sq ft + 1460 sq ft
BELOW GRADE

The following is a disclaimer regarding the approximate nature of dimensions and floor areas listed in this document:

Disclaimer:

The dimensions and floor areas listed in this document are provided as an estimate only and are intended to be used for illustration purposes only. These measurements are not necessarily meant to be a perfect representation of the actual space.

Notes regarding measurement methods and accuracy:

The utilization of laser measurement technology during the 3D model capturing process at the location provides an accurate representation of floor plans, with a typical margin of error of 3-5%. For the most accurate and official measurement data, it is advised to consult official documents such as MPAC records, builder's pre-construction plans, or data from certified measurement companies.

Exterior wall thickness is included in the calculation of the overall square footage and is considered as a component of the footprint. The wall thickness measurement is obtained onsite whenever possible, or estimated in the event where obtaining onsite measurements is not possible, such as in the case of condominium buildings where wall thickness may vary throughout the building.