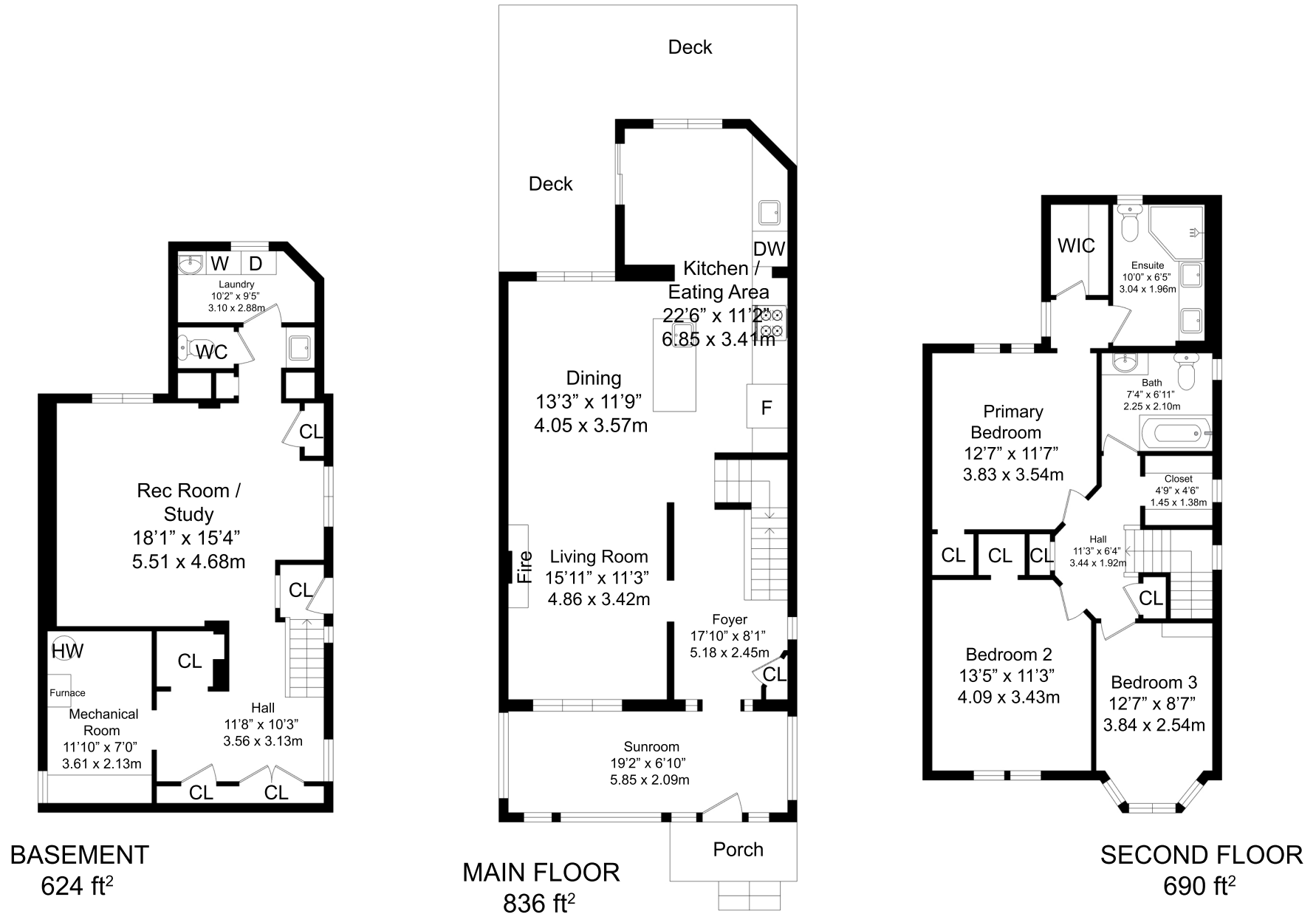


# 18 HUMBERVIEW RD, YORK, ON M6S 1W6, CANADA

APPROXIMATE GROSS INTERNAL AREA 2150 ft<sup>2</sup> = 200 m<sup>2</sup>



Approximate Gross Internal Area. Floor Plans are for illustrative purposes only.

Please refer to our terms and conditions found on our website at [www.soareproductions.com](http://www.soareproductions.com) regarding the accuracy of the floor plan