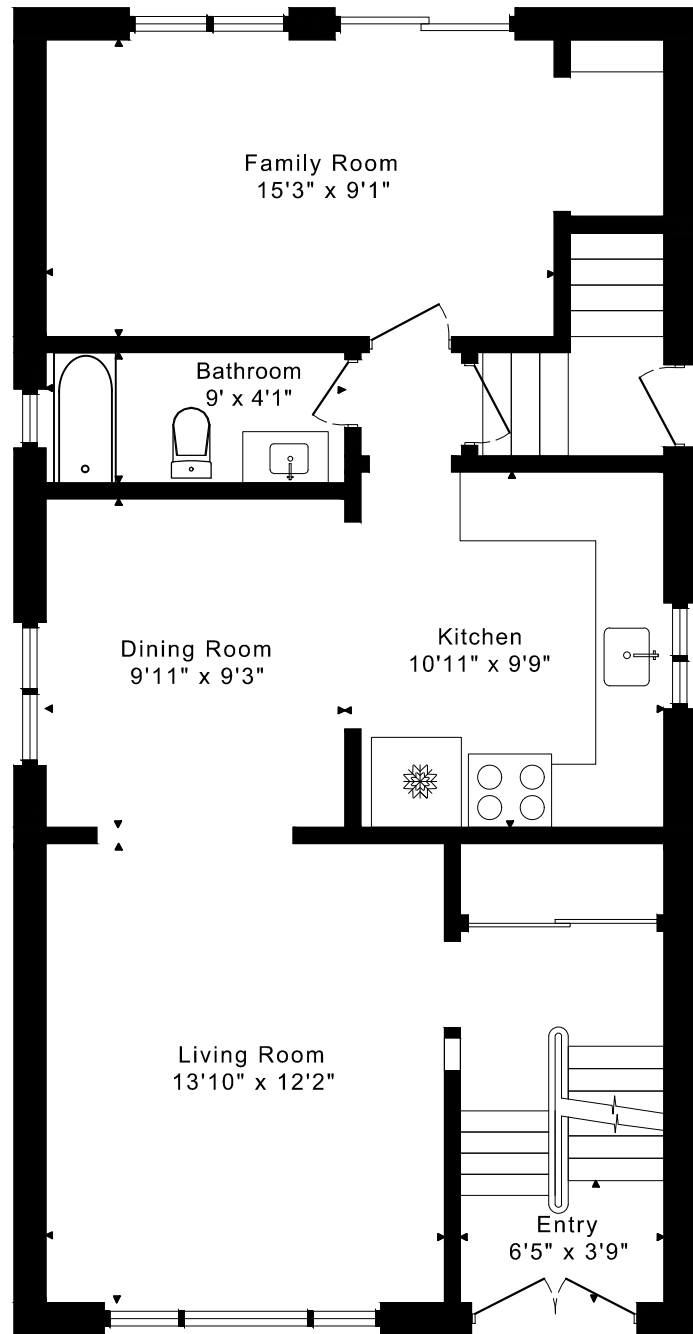
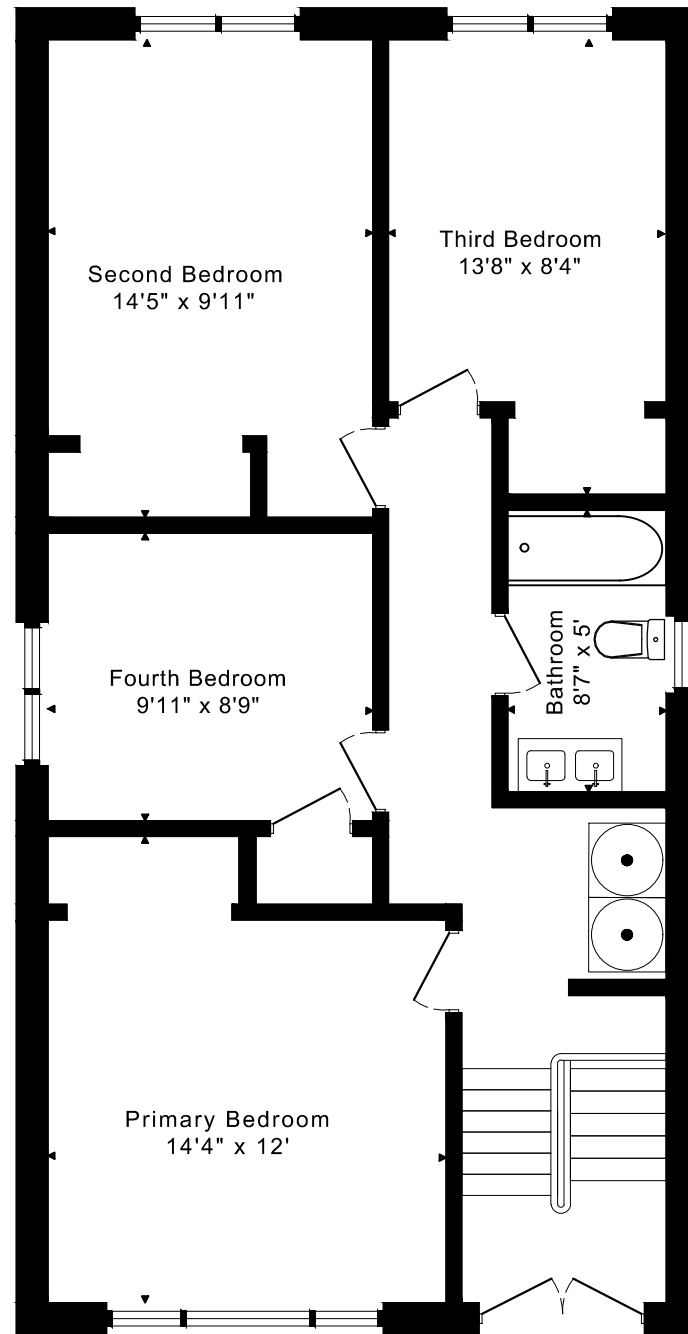


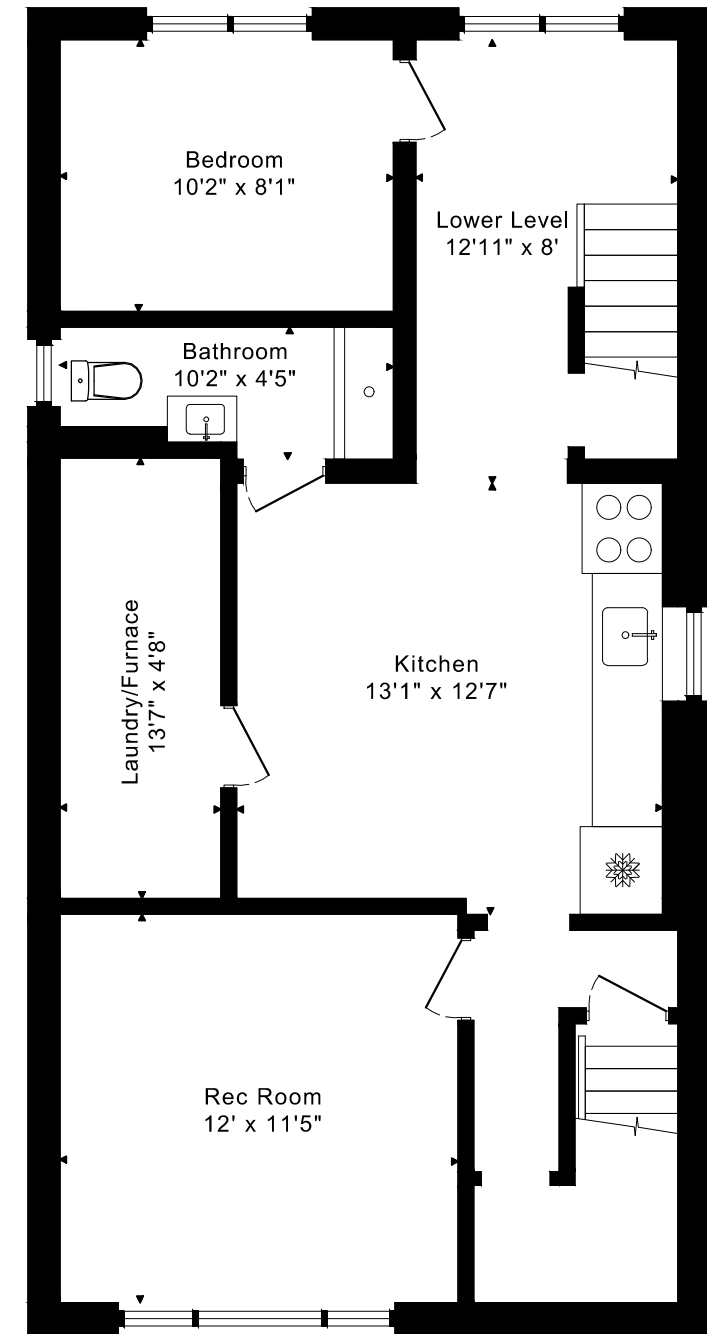
54 ORMSKIRK AVENUE FLOOR PLANS



MAIN FLOOR
850 SQUARE FEET



SECOND FLOOR
850 SQUARE FEET

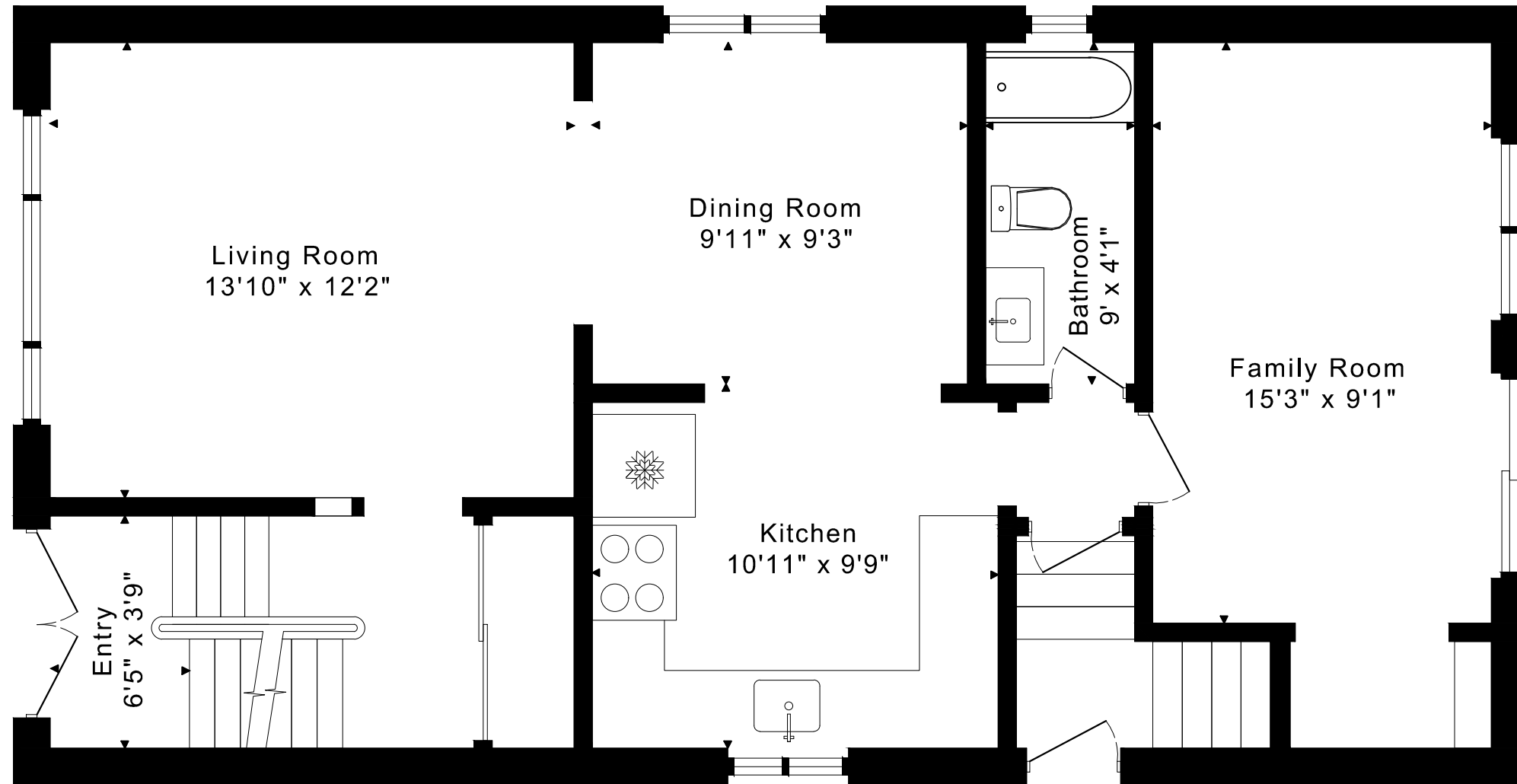


LOWER FLOOR
850 SQUARE FEET

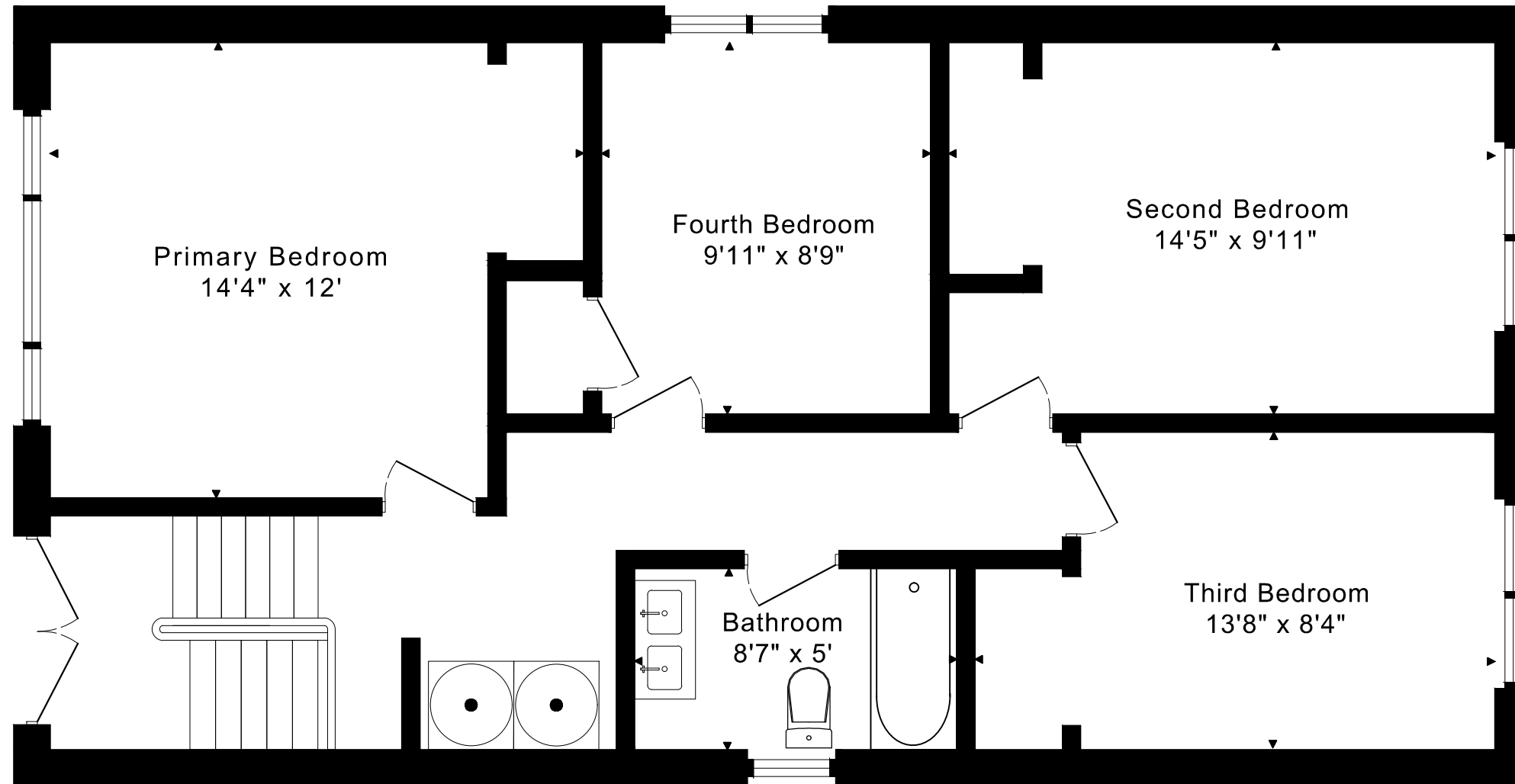
1700 sq ft + 850 sq ft
BELOW GRADE

54 ORMSKIRK AVENUE FLOOR PLANS

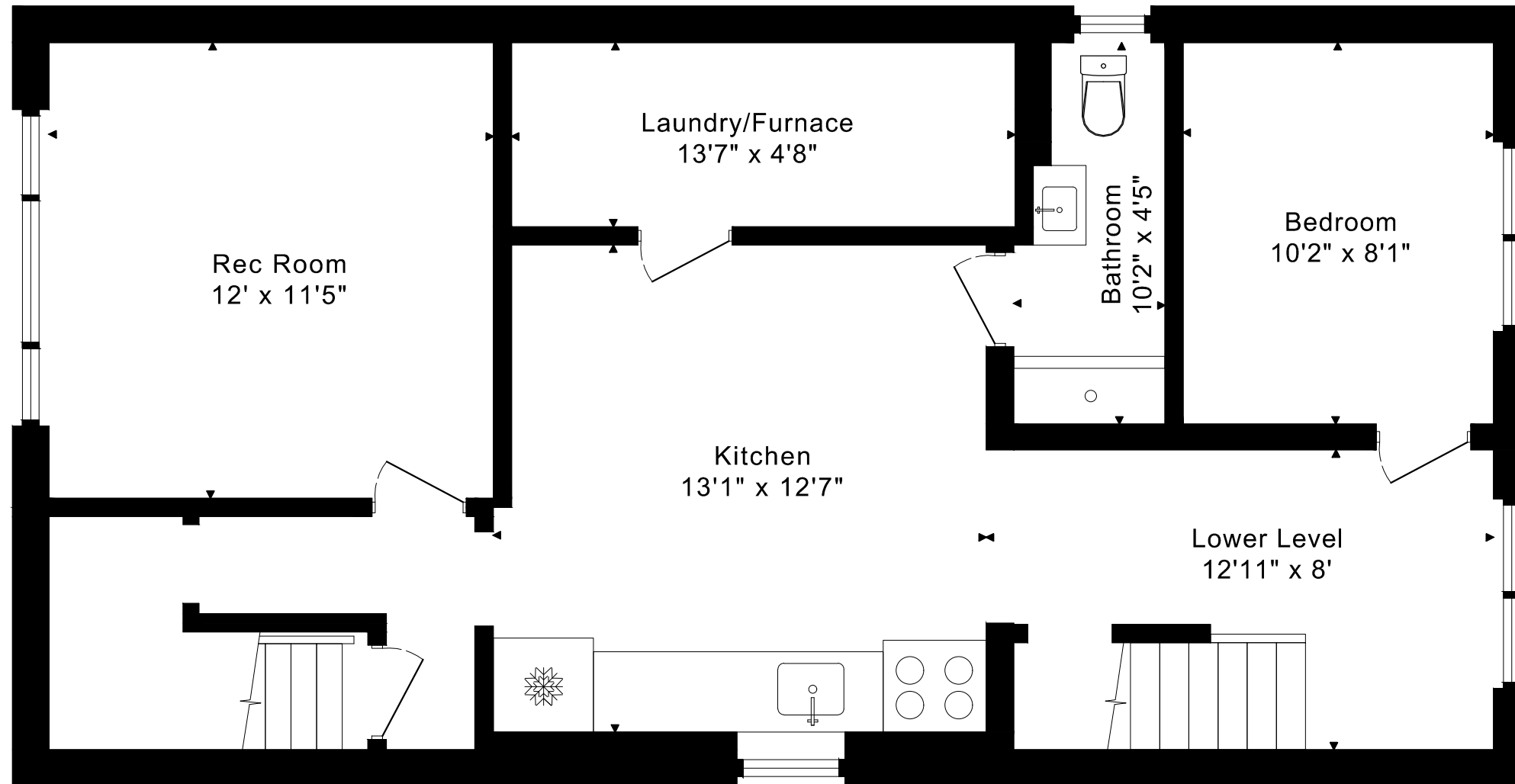
MAIN FLOOR 850 SQUARE FEET



54 ORMSKIRK AVENUE
FLOOR PLANS
SECOND FLOOR 850 SQUARE FEET



54 ORMSKIRK AVENUE
FLOOR PLANS
LOWER FLOOR 850 SQUARE FEET



54 ORMSKIRK AVENUE ROOM MEASUREMENTS

Floor	Room	Imperial				Metric [m]	
		Length		Width		Length	Width
		Feet	Inches	Feet	Inches		
Second	Primary Bedroom	14	4	12	0	4,37	3,66
	Second Bedroom	14	5	9	11	4,39	3,02
	Third Bedroom	13	8	8	4	4,17	2,54
	Fourth Bedroom	9	11	8	6	3,02	2,59
	Bathroom	8	7	5	0	2,62	1,52
Main	Entry	6	5	3	9	1,96	1,14
	Living Room	13	10	12	2	4,22	3,71
	Dining Room	9	11	9	3	3,02	2,82
	Kitchen	10	11	9	9	3,33	2,97
	Family Room	15	3	9	1	4,65	2,77
	Bathroom	9	0	4	1	2,74	1,24
Lower	Rec Room	12	0	11	5	3,66	3,48
	Kitchen	13	7	12	1	4,14	3,68
	Lower Level	12	11	8	0	3,94	2,44
	Bedroom	10	2	8	1	3,10	2,46
	Bathroom	10	2	4	5	3,10	1,35
	Laundry/Furnace	13	7	4	8	4,14	1,42

CAPTURED ON: 11 JUNE 2023
 DIMENSIONS ARE APPROXIMATE AND SHOULD BE CONSIDERED
 ILLUSTRATIVE ONLY.

1700 sq ft + 850 sq ft
 BELOW GRADE

The following is a disclaimer regarding the approximate nature of dimensions and floor areas listed in this document:

Disclaimer:

The dimensions and floor areas listed in this document are provided as an estimate only and are intended to be used for illustration purposes only. These measurements are not necessarily meant to be a perfect representation of the actual space.

Notes regarding measurement methods and accuracy:

The utilization of laser measurement technology during the 3D model capturing process at the location provides an accurate representation of floor plans, with a typical margin of error of 3-5%. For the most accurate and official measurement data, it is advised to consult official documents such as MPAC records, builder's pre-construction plans, or data from certified measurement companies.

Exterior wall thickness is included in the calculation of the overall square footage and is considered as a component of the footprint. The wall thickness measurement is obtained onsite whenever possible, or estimated in the event where obtaining onsite measurements is not possible, such as in the case of condominium buildings where wall thickness may vary throughout the building.