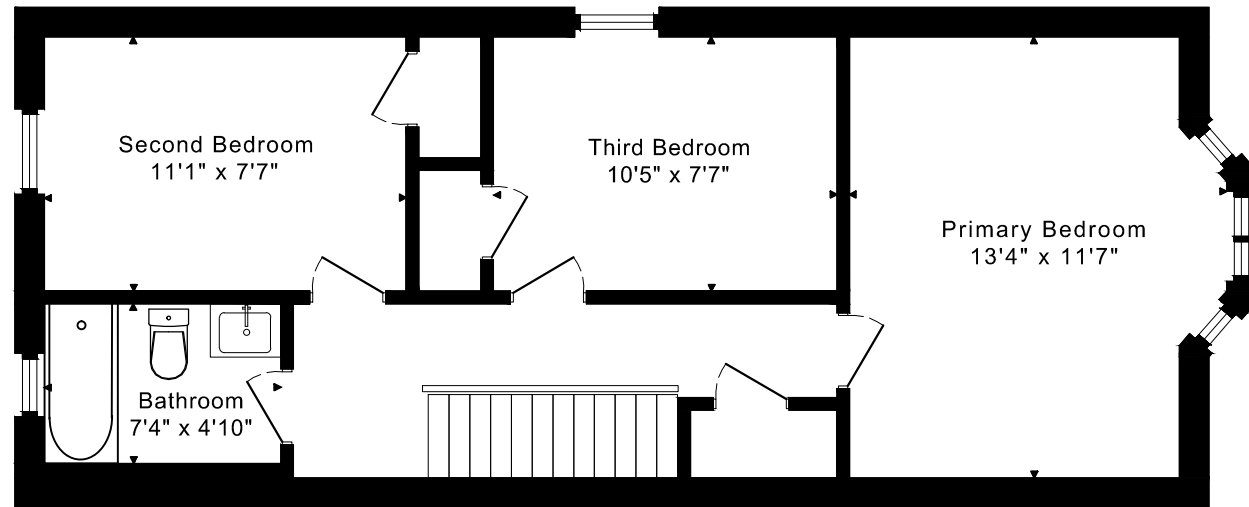
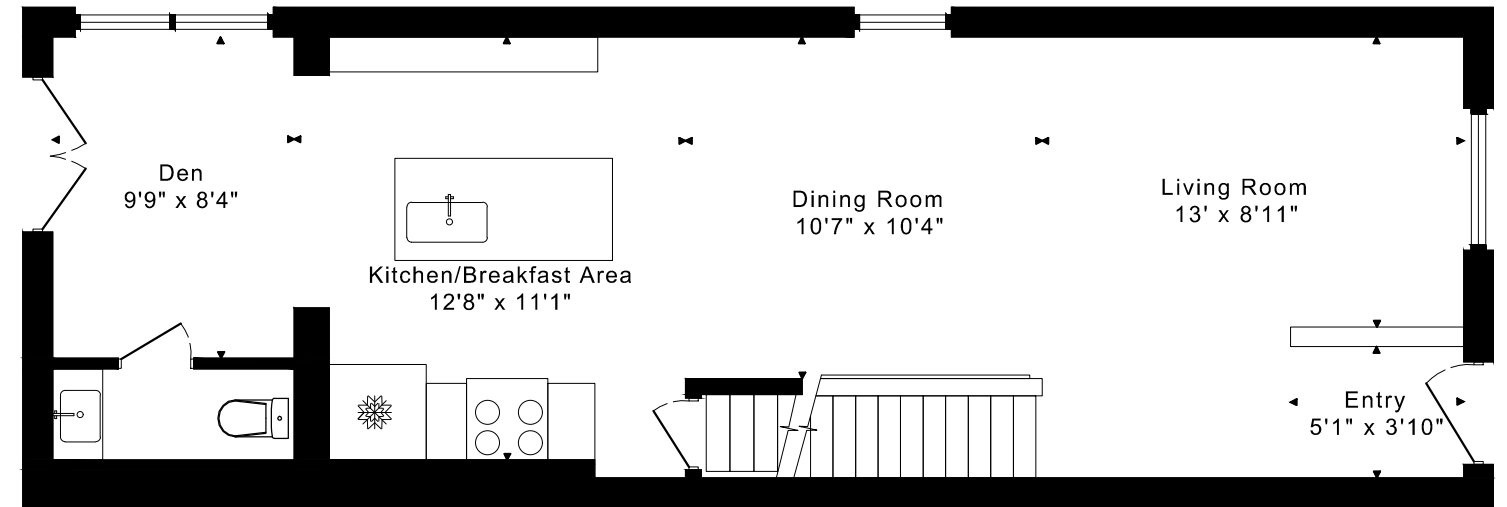


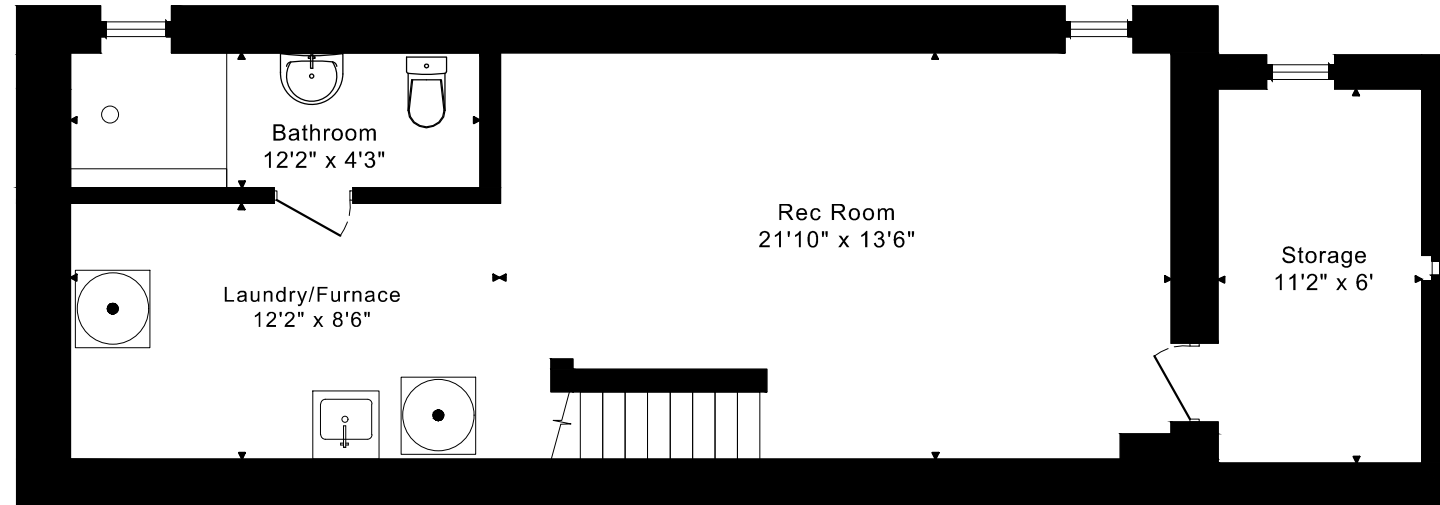
10 CRISCOE STREET FLOOR PLANS



SECOND FLOOR
560 SQUARE FEET



MAIN FLOOR
695 SQUARE FEET



LOWER FLOOR
665 SQUARE FEET

CAPTURED ON: 8 NOV 2022
DIMENSIONS ARE APPROXIMATE AND SHOULD BE CONSIDERED
ILLUSTRATIVE ONLY.

1255 sq ft + 665 sq ft
BELOW GRADE